

Casemet Cubo F terminal enclosures



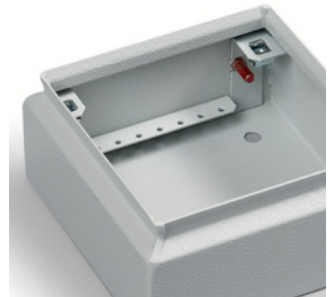
IP 66

Sizes 150 x 150 x 80 – 800 x 400 x 120 mm

- Polyester painted mild steel: plain sides and flange openings
- Stainless steel AISI 304: plain sides
- Stainless steel AISI 316L: plain sides

Cubo F terminal enclosure in brief

- Has plain sides.
- 120 mm deep polyester painted enclosures are also available with flange openings or a polycarbonate window as standard.
- Available in 30 sizes and in two base depth alternatives.
- Small push button enclosures also available in four sizes.
- Include a perforated support for DIN rail or mounting plate enabling the maximum use of all sides of the enclosure for cable entries.
- Has M6 bolt for earthing on one side of the base.
- Available in AISI 316 stainless steel.
- All versions can be supplied with hinges.
- Polyester painted enclosures with wall mounting holes.
- Stainless and acid-proof steel versions have drill marks ready.



These enclosures feature a perforated support for a DIN rail or mounting plate as standard. The optimised mounting supports allow maximum use of all sides of the enclosure for cable entries.

Product packaging contents

- Enclosure base
- Cover
- Cover screws with gasket and cage nuts.
- Cover plugs for mounting holes
- An M6 nut and a washer for earthing
- Earth marks
- Models with flange openings also include cover plates, bolts and washers



120 mm deep polyester painted enclosures are also available with flange openings. The product package includes cover plates, bolts and washers.

Compliance

Steel enclosures



Technical information

Degree of protection:	IP 66, models with two cover screws IP 55
Impact resistance:	IK 09 (-25 °C to +35 °C), models with window IK 07 (-5 °C to +80 °C)

Materials

Base/door:	Polyester painted mild steel, stainless steel AISI304 or acid-proof steel AISI316L
Gasket:	PUR (polyurethane)
Cover screw gasket:	Dryflex (SEBS)

Knockout alternatives

Polyester-coated enclosures:	Plain sides, flange openings
AISI304:	Plain sides
AISI316L:	Plain sides

Standard colour

Polyester-painted enclosures:

Case Casemet Cubo F terminal enclosures

Casemet Cubo F terminal enclosures, plain sides, polyester painted mild steel

Product code	Description	External dimensions (mm)				Package size (pcs)
		Width	Height	Depth	Base depth	
FFUP151508A	Plain sides	150	150	80	65	1
FFUP202008A	Plain sides	200	200	80	65	1
FFUP301508A	Plain sides	300	150	80	65	1
FFUP302008A	Plain sides	300	200	80	65	1
FFUP303008A	Plain sides	300	300	80	65	1
FFUP402008A	Plain sides	400	200	80	65	1
FFUP403008A	Plain sides	400	300	80	65	1
FFUP404008A	Plain sides	400	400	80	65	1
FFUP502008A	Plain sides	500	200	80	65	1
FFUP503008A	Plain sides	500	300	80	65	1
FFUP602008A	Plain sides	600	200	80	65	1
FFUP603008A	Plain sides	600	300	80	65	1
FFUP604008A	Plain sides	600	400	80	65	1
FFUP802008A	Plain sides	800	200	80	65	1
FFUP804008A	Plain sides	800	400	80	65	1
FFUP151512A	Plain sides	150	150	120	105	1
FFUP202012A	Plain sides	200	200	120	105	1
FFUP301512A	Plain sides	300	150	120	105	1
FFUP302012A	Plain sides	300	200	120	105	1
FFUP303012A	Plain sides	300	300	120	105	1
FFUP402012A	Plain sides	400	200	120	105	1
FFUP403012A	Plain sides	400	300	120	105	1
FFUP404012A	Plain sides	400	400	120	105	1
FFUP502012A	Plain sides	500	200	120	105	1
FFUP503012A	Plain sides	500	300	120	105	1
FFUP602012A	Plain sides	600	200	120	105	1
FFUP603012A	Plain sides	600	300	120	105	1
FFUP604012A	Plain sides	600	400	120	105	1
FFUP802012A	Plain sides	800	200	120	105	1
FFUP804012A	Plain sides	800	400	120	105	1



FFUP151508



FFUP403012A

Casemet Cubo F terminal enclosures, plain sides, stainless steel AISI304

Product code	Description	External dimensions (mm)				Package size (pcs)
		Width	Height	Depth	Base depth	
FSUP151508	Plain sides	150	150	80	65	1
FSUP202008	Plain sides	200	200	80	65	1
FSUP301508	Plain sides	300	150	80	65	1
FSUP302008	Plain sides	300	200	80	65	1
FSUP303008	Plain sides	300	300	80	65	1
FSUP402008	Plain sides	400	200	80	65	1
FSUP403008	Plain sides	400	300	80	65	1
FSUP404008	Plain sides	400	400	80	65	1
FSUP502008	Plain sides	500	200	80	65	1
FSUP503008	Plain sides	500	300	80	65	1
FSUP602008	Plain sides	600	200	80	65	1
FSUP603008	Plain sides	600	300	80	65	1
FSUP604008	Plain sides	600	400	80	65	1
FSUP802008	Plain sides	800	200	80	65	1
FSUP804008	Plain sides	800	400	80	65	1
FSUP151512	Plain sides	150	150	120	105	1
FSUP202012	Plain sides	200	200	120	105	1
FSUP301512	Plain sides	300	150	120	105	1
FSUP302012	Plain sides	300	200	120	105	1
FSUP303012	Plain sides	300	300	120	105	1
FSUP402012	Plain sides	400	200	120	105	1
FSUP403012	Plain sides	400	300	120	105	1
FSUP404012	Plain sides	400	400	120	105	1
FSUP502012	Plain sides	500	200	120	105	1
FSUP503012	Plain sides	500	300	120	105	1
FSUP602012	Plain sides	600	200	120	105	1
FSUP603012	Plain sides	600	300	120	105	1
FSUP604012	Plain sides	600	400	120	105	1
FSUP802012	Plain sides	800	200	120	105	1
FSUP804012	Plain sides	800	400	120	105	1



FSUP151508



FSUP403012

Casemet Cubo F terminal enclosures, plain sides, stainless steel AISI316L

Product code	Description	External dimensions (mm)				Package size (pcs)
		Width	Height	Depth	Base depth	
FAUP151508	Plain sides	150	150	80	65	1
FAUP202008	Plain sides	200	200	80	65	1
FAUP301508	Plain sides	300	150	80	65	1
FAUP302008	Plain sides	300	200	80	65	1
FAUP303008	Plain sides	300	300	80	65	1
FAUP402008	Plain sides	400	200	80	65	1
FAUP403008	Plain sides	400	300	80	65	1
FAUP404008	Plain sides	400	400	80	65	1
FAUP502008	Plain sides	500	200	80	65	1
FAUP503008	Plain sides	500	300	80	65	1
FAUP602008	Plain sides	600	200	80	65	1
FAUP603008	Plain sides	600	300	80	65	1
FAUP604008	Plain sides	600	400	80	65	1
FAUP802008	Plain sides	800	200	80	65	1
FAUP804008	Plain sides	800	400	80	65	1
FAUP151512	Plain sides	150	150	120	105	1
FAUP202012	Plain sides	200	200	120	105	1
FAUP301512	Plain sides	300	150	120	105	1
FAUP302012	Plain sides	300	200	120	105	1
FAUP303012	Plain sides	300	300	120	105	1
FAUP402012	Plain sides	400	200	120	105	1
FAUP403012	Plain sides	400	300	120	105	1
FAUP404012	Plain sides	400	400	120	105	1
FAUP502012	Plain sides	500	200	120	105	1
FAUP503012	Plain sides	500	300	120	105	1
FAUP602012	Plain sides	600	200	120	105	1
FAUP603012	Plain sides	600	300	120	105	1
FAUP604012	Plain sides	600	400	120	105	1
FAUP802012	Plain sides	800	200	120	105	1
FAUP804012	Plain sides	800	400	120	105	1



FAUP151508



FAUP403012

Casemet Cubo F terminal enclosures, flange openings, polyester painted mild steel
Flange opening size: 192 x 62 mm

Product code	Description	External dimensions (mm)				Package size (pcs)
		Width	Height	Depth	Base depth	
FFUF301512A	Flanges/side 1 + 1 + 0 + 0	300	150	120	105	1
FFUF302012A	Flanges/side 1 + 1 + 0 + 0	300	200	120	105	1
FFUF303012A	Flanges/side 1 + 1 + 1 + 1	300	300	120	105	1
FFUF402012A	Flanges/side 1 + 1 + 0 + 0	400	200	120	105	1
FFUF403012A	Flanges/side 1 + 1 + 1 + 1	400	300	120	105	1
FFUF404012A	Flanges/side 1 + 1 + 1 + 1	400	400	120	105	1
FFUF502012A	Flanges/side 2 + 2 + 0 + 0	500	200	120	105	1
FFUF503012A	Flanges/side 2 + 2 + 1 + 1	500	300	120	105	1
FFUF602012A	Flanges/side 2 + 2 + 0 + 0	600	200	120	105	1
FFUF603012A	Flanges/side 2 + 2 + 1 + 1	600	300	120	105	1
FFUF604012A	Flanges/side 2 + 2 + 1 + 1	600	400	120	105	1
FFUF802012A	Flanges/side 3 + 3 + 0 + 0	800	200	120	105	1
FFUF804012A	Flanges/side 3 + 3 + 1 + 1	800	400	120	105	1



FFUF303012A

Casemet Cubo F terminal enclosures, polycarbonate window, polyester painted mild steel

Product code	Description	External dimensions (mm)				Package size (pcs)
		Width	Height	Depth	Base depth	
FFUW202012A	Window size: 120 x 120 mm	200	200	120	105	1
FFUW302012A	Window size: 220 x 120 mm	300	200	120	105	1
FFUW402012A	Window size: 320 x 120 mm	400	200	120	105	1
FFUW502012A	Window size: 420 x 120 mm	500	200	120	105	1
FFUW602012A	Window size: 520 x 120 mm	600	200	120	105	1
FFUW802012A	Window size: 720 x 120 mm	800	200	120	105	1



FFUW302012A

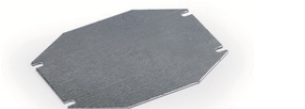
Casemet Cubo F enclosures with push button openings, stainless steel AISI304

Components installed in prefabricated openings can decrease the final degree of protection.

Product code	Description	External dimensions (mm)				Package size (pcs)
		Width	Height	Depth	Base depth	
FSPB101009	1 push button opening	100	100	90	75	1
FSPB161009	2 push button openings	160	100	90	75	1
FSPB221009	3 push button openings	220	100	90	75	1
FSPB281009	4 push button openings	280	100	90	75	1

Mounting plates and DIN rails

Product code	Description	Dimensions (mm)	Package size (pcs)
Mounting plates, galvanised steel			
FMP1515	150 x 150 mm enclosures	135 x 100 x 2	10
FMP2020	200 x 200 mm enclosures	185 x 150 x 2	10
FMP3015	300 x 150 mm enclosures	285 x 100 x 2	10
FMP3020	300 x 200 mm enclosures	285 x 150 x 2	10
FMP3030	300 x 300 mm enclosures	285 x 250 x 2	10
FMP4020	400 x 200 mm enclosures	385 x 150 x 2	10
FMP4030	400 x 300 mm enclosures	385 x 250 x 2	5
FMP4040	400 x 400 mm enclosures	385 x 350 x 2	5
FMP5020	500 x 200 mm enclosures	485 x 150 x 2	5
FMP5030	500 x 300 mm enclosures	485 x 250 x 2	5
FMP6020	600 x 200 mm enclosures	585 x 150 x 2	5
FMP6030	600 x 300 mm enclosures	585 x 250 x 2	5
FMP6040	600 x 400 mm enclosures	585 x 350 x 2	5
FMP8020	800 x 200 mm enclosures	785 x 150 x 2	5
FMP8040	800 x 400 mm enclosures	785 x 350 x 2	5
DIN rails, galvanised steel			
DK3515	150 mm side	35 x 140	10
DK3520	200 mm side	35 x 190	10
DK3530	300 mm side	35 x 290	10
DK3540	400 mm side	35 x 390	10
DK3550	500 mm side	35 x 490	5
DK3560	600 mm side	35 x 590	5
DK3580	800 mm side	35 x 790	5



FMP1515

Other accessories

Product code	Description	Dimensions (mm)	Package size (pcs)
FFUF1A	Cover plate	84 x 214 x 2	1
FHI2	Hinge pair, stainless steel	30 x 15 x 11	1
FFL1	Fastening lugs, 10 mm high, set of 4 pcs	depth 10 mm	1
FFL2	Fastening lugs, 10 mm high, set of 4 pcs	depth 10 mm	1
EFFL2.50	Fastening lugs, 50 mm high, set of 4 pcs	depth 50 mm	1
EFFL3.20	Fastening lugs, 20 mm high, set of 4 pcs, galvanized steel	depth 20 mm	1
EFFL3.22	Fastening lugs, 20 mm high, set of 4 pcs, AISI 316L	depth 20 mm	1



Cover plate, FFUF1A.



Hinge pair, FHI2.



Fastening lug set, 20 mm high, EFFL3.20